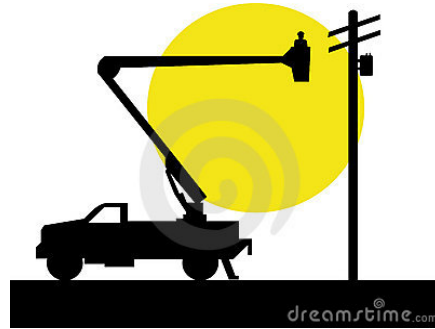


Manager – Jeffrey Ellison

Board Members –  
*Ed Schwabe – President*  
*Jason Matthews – Vice  
President & Secretary.*  
*Treasurer – John Trask*  
*George Baker – Frenchboro*  
*Sonny Sprague*  
*Jim Stone*  
*Joe Staples*  
*Eric Chetwynd*  
*Bob Pickup*

## SWAN'S ISLAND ELECTRIC COOPERATIVE

**March, 2015**



Members with billing questions should contact Karen Griffin at 526-4336 or at <a href="mailto:siecbilling@gmail.com">siecbilling@gmail.com</a>
--

<b>Emergency contact #:</b>
-----------------------------

<b>207-479- 0657 and 0658</b>
-------------------------------

**From the Manager:** I would like to thank everyone who responded to Bonnie Turner's needs after her home burned. That is what makes this island so special.

This is the last very large electric bill for a while. Your April bill will reflect about a 50% drop in EMERA's electric charge. We are exploring all means of keeping the cost of your bills down, including looking for other electric power suppliers, installing more efficient solid state meters, and a possible merger with EMERA. We hope to have some recommendations ready for the Annual Meeting.

We have our bucket truck back on the island. A section of the boom had to be replaced in order for it to pass the test that insulates the bucket from the ground. Steve Green will be going to Vinylhaven when the weather breaks to work with their crew of first class linemen to advance his training.

Ruth Joy has done an incredible job of reading meters against all odds. If you have seen her trudging through the snow you may have worried that she would disappear and we wouldn't find her till Spring.

**From the Board:** Those members who were able to attend the Co-Op's Winter Community Update on Feb. 26 will have heard Tom McAloon's report on his Study of the options for Swan's island in the delivery of affordable, sustainable energy. [see the Co-Op website for a link to view the entire meeting] One of the options that Tom discussed was the possibility of merging with a larger electric utility – perhaps Emera. Your Board, at the direction of the Maine Public Utilities Commission (PUC) is also studying the merger question and owes the PUC a report by summer's end on the advantages and disadvantages of such an action. Toward this end we have been exchanging information with Emera for the past several months aimed at learning what the impact would be on our Cooperative and its members if the PUC were to direct, at some point in the future, that a larger utility include Swan's Island and Frenchboro in its service area. These are "early days" yet, and we are in the fact-finding mode. No negotiations are occurring with Emera. While the promise of much lower electric rates is exciting to contemplate, your Board is committed to try to do a thorough job in reporting to the PUC and to you, the members, regarding all the advantages and disadvantages of such a move. Stay turned to this Newsletter and our Co-Op website for updates.

***SIEC Website:***

[www.swansislandelectric.com](http://www.swansislandelectric.com)

***SIEC Office Hours are:***

***7:30 AM – 4 PM***