

Manager – Jeffrey Ellison

Board Members

*Ed Schwabe – President*

*Jason Matthews*

*Vice President & Secretary*

*John Trask - Treasurer*

*George Baker – Frenchboro*

*Sonny Sprague*

*Jim Stone*

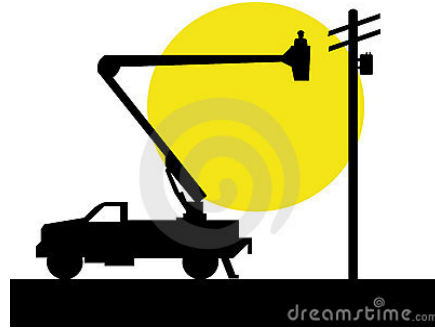
*Joe Staples*

*Eric Chetwynd*

*Bob Pickup*

# SWAN'S ISLAND ELECTRIC COOPERATIVE

**FEBRUARY, 2015**



Members with billing questions should contact Karen Griffin at 526-4336 or at [siecbilling@gmail.com](mailto:siecbilling@gmail.com)

**Emergency contact #:**

**207-479- 0657 and 0658**

**From the Manager:** We have escaped many outages during this bad weather spell. This is because your electric bill dollars are at work clearing trees and putting up new distribution lines. Thank you. Once again, I would like to remind you about clearing a path to your meter for the meter readers. Ruth is very appreciative of everyone's efforts, so far. Reading meters in the deep snow is never easy, so please keep up the good work.

The PUC has published their Standard Offer Rates for Medium Non-residential Class customers. I also listed last year's rates for your comparison:

<b>Last Year</b>	<b>Rate</b>	<b>New Year</b>	<b>Rate</b>
March 2014	.10245	March 2015	.077226
April 2014	.07495	April 2015	.058256
May 2014	.06462	May 2015	.051662
June 2014	.07603	June 2015	.066140
July 2014	.07730	July 2015	.065566
August 2014	.07299	August 2015	.065262
September 2014	.06234	September 2015	.057016
October 2014	.06291	October 2015	.058280
November 2014	.08863	November 2015	.068462
December 2014	.12416	December 2015	.096050
January 2015	.16046		
February 2015	.15492		

As a reminder, the rates above do not reflect Emera's transmission costs, nor do they reflect the line loss that we experience on Swan's Island and Frenchboro and which must be accounted for when we establish the electric charge which is posted on each monthly bill. Typically, these costs add an additional two cents per kilowatt hour to the raw cost of power reflected in the standard offer prices above.

**The Electric Cooperative's Winter Quarter Community Update is scheduled for Thursday evening, February 26<sup>th</sup>, 7 PM at the Library, and will feature Tom McAloon's review of his comprehensive study on the options for delivery of affordable energy to Swan's island and Frenchboro.**

***SIEC Website:***

[www.swansislandelectric.com](http://www.swansislandelectric.com)

***SIEC Office Hours are:***

**7:30 AM – 4 PM**