

**Manager** – Jeffrey Ellison

**Board Members** –

*Ed Schwabe – President*

*Jason Matthews Vice President*

*Bob Pickup - Treasurer*

*Eric Chetwynd – Rec. Secretary*

*George Baker*

*Joe Staples*

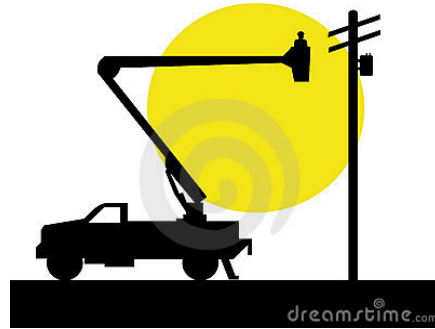
*Tom McAloon*

*Eric Staples*

*Sarah Lane*

# SWAN'S ISLAND ELECTRIC COOPERATIVE

**February, 2016**



Members with billing questions should contact Karen Griffin at 526-4336 or at <a href="mailto:siecbilling@gmail.com"><u>siecbilling@gmail.com</u></a>
---

<b>Emergency contact #:</b>
-----------------------------

<b>207-479- 0657 and 0658</b>
-------------------------------

***From the Board:***

As our Manager and our staff are up to their elbows this week in responding to an ever-growing number of request for data, information, and inventories from Emera, the Board will take on the task this month of informing the membership on developments of the past few weeks and what we can anticipate in the next few weeks.

The examination by Emera of all facets of the Swan's Island Electric Cooperative continues. We were successful by the end of January in supplying answers and documentation for the sixty-some odd interrogatories we had received from Emera at the end of December. At this point in February, the focus has expanded to include the condition and age of the five undersea cables that supply power to our grids on Swan's Island and Frenchboro. Additionally, at Emera's request, we are planning an environmental Phase I test of the soils around our Switching Station near the Ferry terminal as well as the soils around our Cooperative Office at Minturn. These tests are not a surprise to anyone, but are routine, anticipated efforts by Emera to learn everything about the SIEC that they possible can in case an agreement to acquire our Cooperative is approved by our members and, eventually, by the Maine Public Affairs Commission (MPUC).

At its most recent Board meeting, February 4<sup>th</sup>, the Board voted to delay our quarterly community update to mid or late March with the hope of having more concrete information to report to the membership by that time. We are hopeful that we could have access to a draft of a Purchase and Sales agreement by that time – and, while negotiations will most likely still be in progress, there may be some elements of the Agreement that we could begin to share with the membership. As soon as a final date for our Winter Quarterly Update is established we will publicize it in this Newsletter and on the Swan's Island Information Page of Facebook.