

Manager – Jeffrey Ellison

Board Members –

Ed Schwabe – Pres. (526-4053)

Jason Matthew – VP. 526-4542

John Trask–Tr. 609-557-3559

George Baker – 334-2936

Sonny Sprague -526-4139

Jim Stone – 813-217-1377

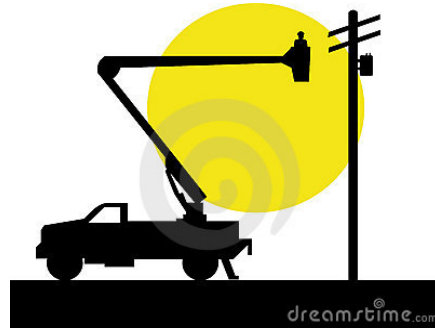
Joe Staples – 664-3371

Eric Chetwynd – 919-259-3665

Bob Pickup -561-809-2888

SWAN'S ISLAND ELECTRIC COOPERATIVE

JUNE, 2015



Members with billing questions should contact Karen Griffin at 526-4336 or at siecbilling@gmail.com

Emergency contact #:

207-479- 0657 and 0658

This month's bill includes your Straw Ballot and your chance to indicate to the Board whether you do, or do not favor the Board entering into formal negotiations with EMERA Maine - in order to secure mainland electric rates. Please note, **this is not a vote to dissolve the Swan's Island Electric Cooperative.** Rather, it will measure how much, or how little, the membership is interested in learning everything there is to learn about what we could expect if we were to become customers of EMERA Maine - and cut our monthly residential light bills nearly in half.

Although it is only a Straw Ballot, this is an important vote because it will be watched closely by both the Maine Public Utilities Commission (MPUC) and EMERA Maine as a critical indicator of how serious we are in taking the steps necessary to bring our power bills down to mainland levels. This past week (June 4th), your **Board of Directors** in a unanimous 9-0 vote – went on record recommending to the membership that they vote in strong support of taking this next step.

An overwhelmingly favorable vote on the Straw Ballot will put your Board in the strongest possible negotiating position to get to work on the serious business of hammering out a **proposed agreement** between the Swan's Island Electric Cooperative and EMERA Maine. This **proposed agreement** would have to be reviewed by, and be found acceptable to the Maine Public Utilities Commission. The final step would then belong to the membership of the Electric Cooperative. The **proposed agreement** would have to be **ratified by a majority vote of the members** on Swan's Island and Frenchboro before it could become effective.

Your Board envisions that the broad outlines of such a **proposed agreement** would guarantee mainland electric rates for all residents of Swan's Island and Frenchboro. EMERA Maine would purchase, own, and maintain the electric distribution grids on both islands, including the submarine cables. From the purchase price, the Cooperative would extinguish its debt to its Federal lenders and be dissolved. All Members of the Electric Cooperative would become customers of EMERA Maine.

Members are encouraged to contact any of the Board members you desire if you have questions about the Straw Ballot. Every Director has approved the listing of his contact phone number at the top left of this Newsletter for the convenience of the membership. Also, if you are on island and want to attend our regular monthly Board meeting in July, it will be held at the Library, Thursday, July 2nd at 6:30 PM.